

Service Animals



Allowed

Service animals

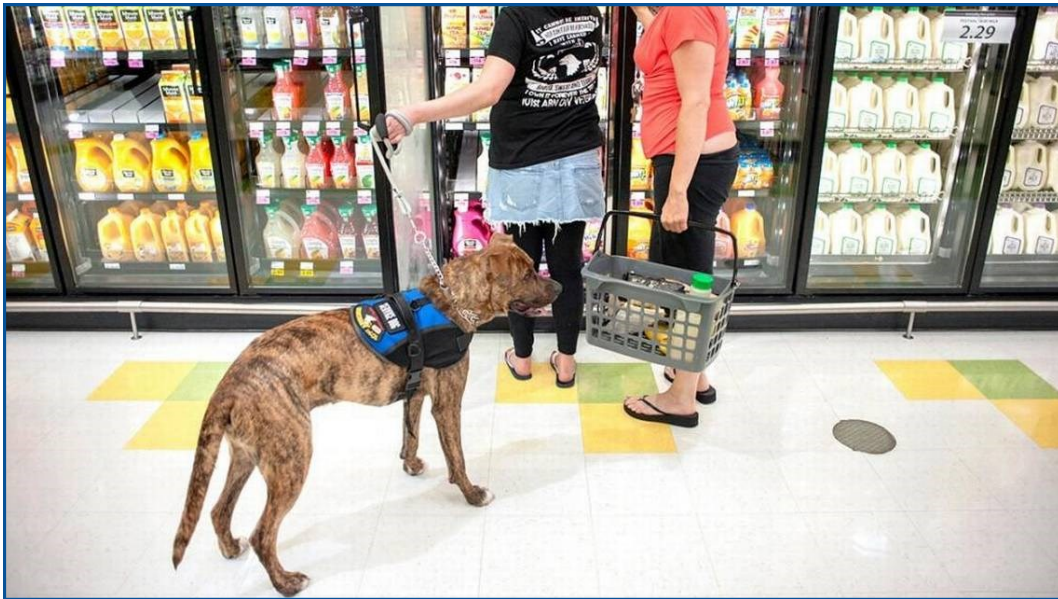
A service animal is a dog or miniature horse that is individually trained to perform a task or service for a person with a disability.



Not Allowed

*Pets, assistance, companion,
and emotional support animals*

These animals may not be individually trained to perform a task or service or a person with a disability, but may help with an aspect of the person's disability.



As an employee of a retail food establishment, you may ask a customer:

- 1) "Is the animal required because of a disability?"
- 2) "What task does it perform?"

*If any animal, even a service animal, is out of control of the owner or not housebroken, that animal can be asked to leave a business. However, the business owner must make its services or goods available to the person with a disability.

